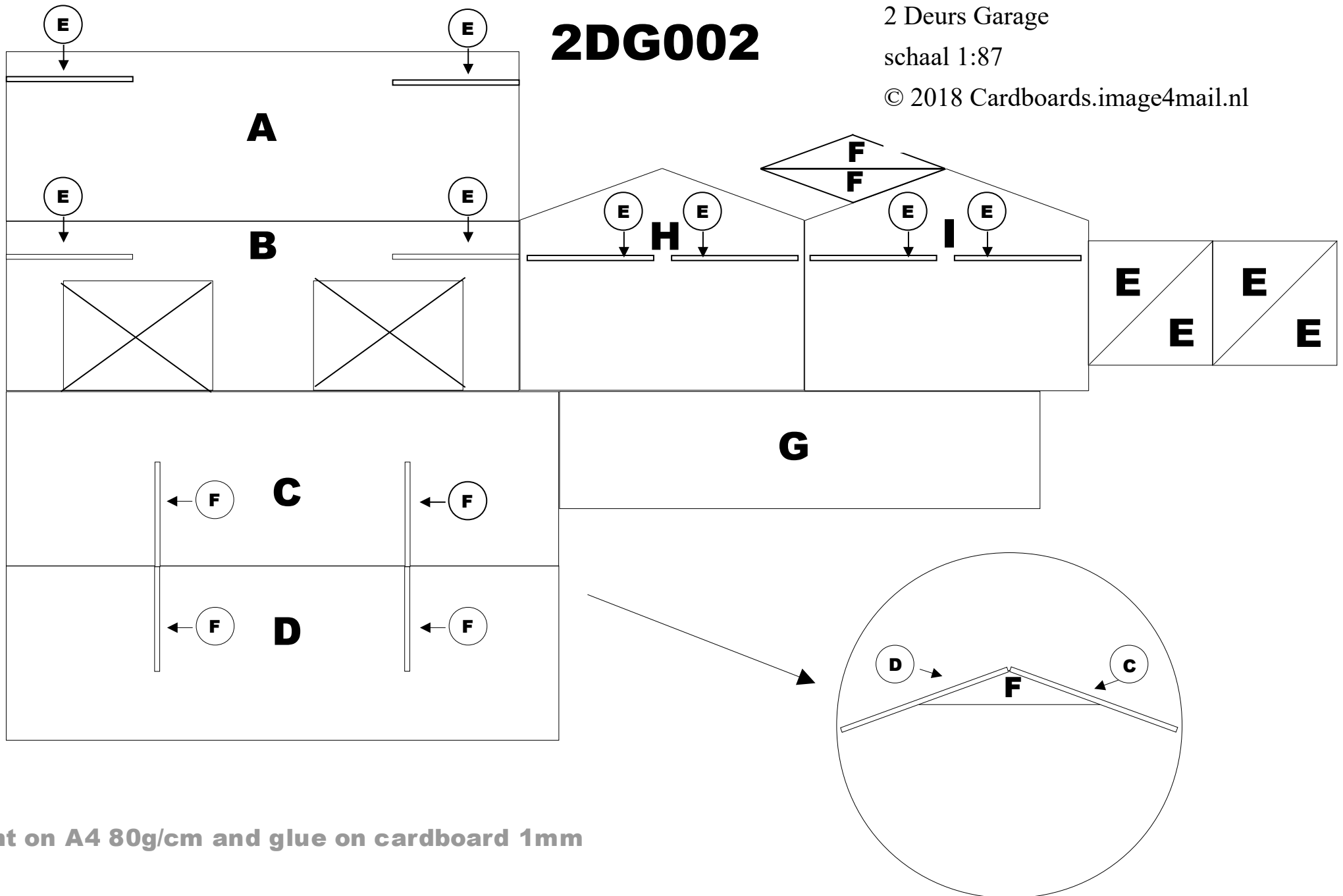


2DG002

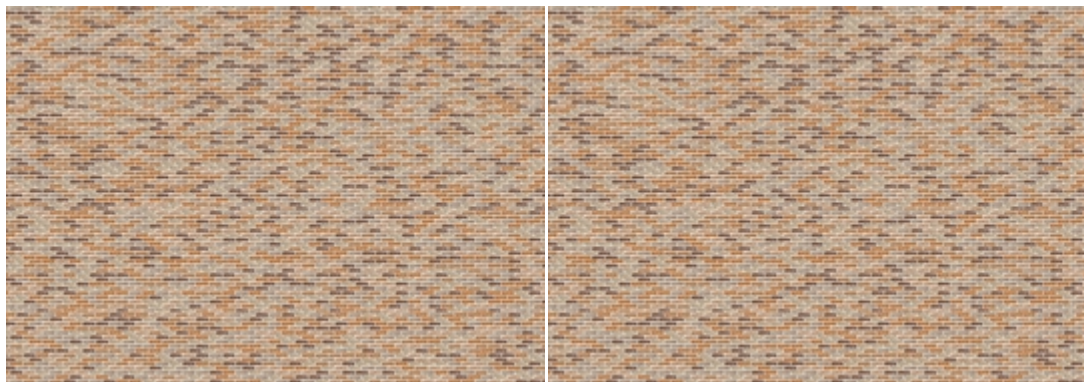
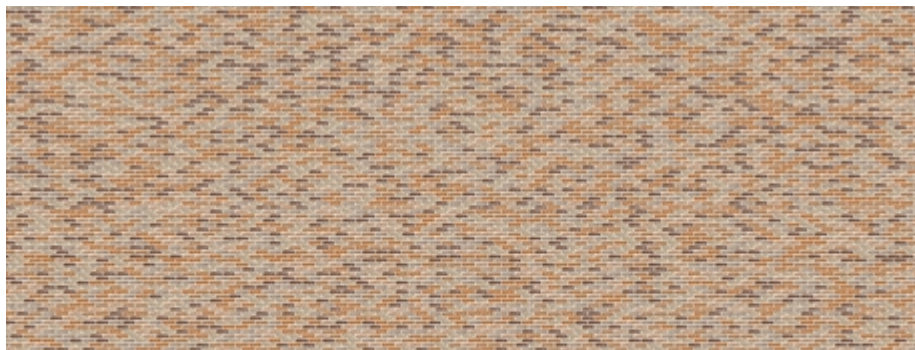
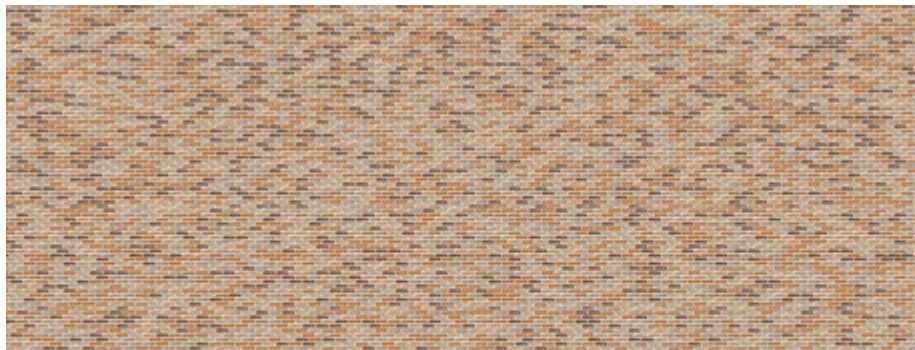
2 Deurs Garage

schaal 1:87

© 2018 Cardboards.image4mail.nl



Print on A4 80g/cm and glue on cardboard 1mm

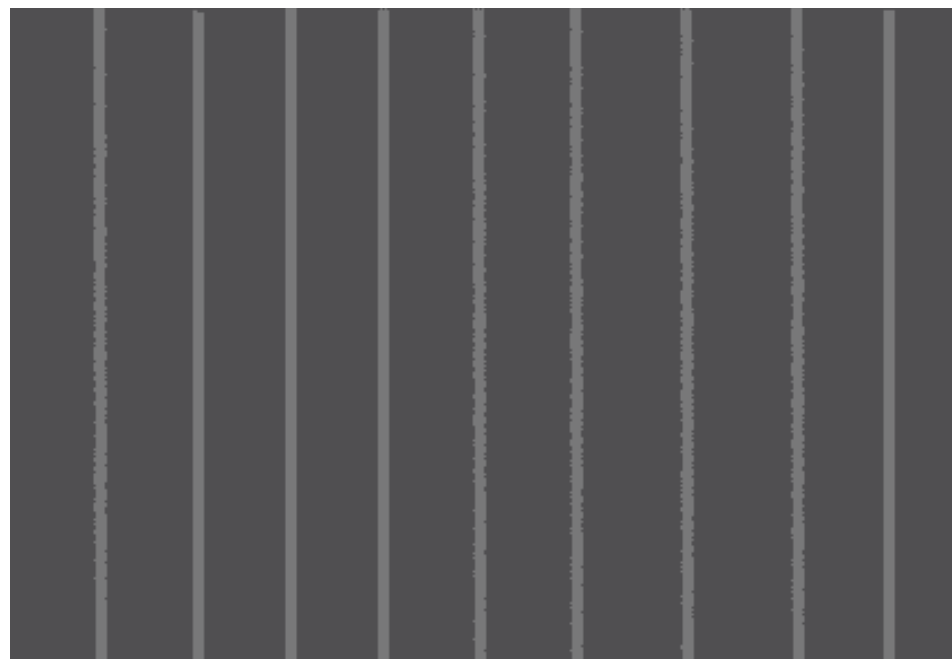
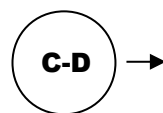
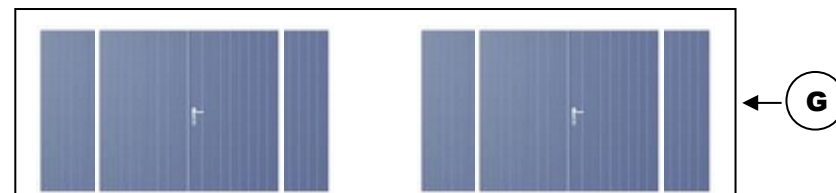


2DG002

2 Deurs Garage

schaal 1:87

© 2018 Cardboards.image4mail.nl



necessary tools



glue page 1 on cardboard 1mm and cut the parts using a utility knife

Cut the parts of page 2 and glue them on the parts of page 1

Glue the parts and connecting pieces on the sidewalls and the roof with the glue pistol

