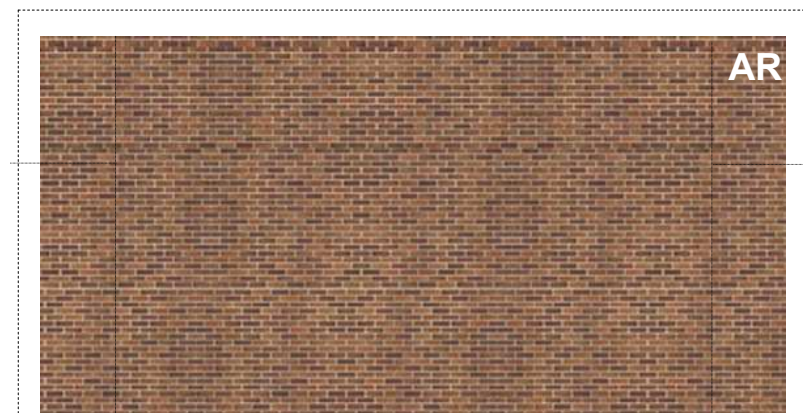
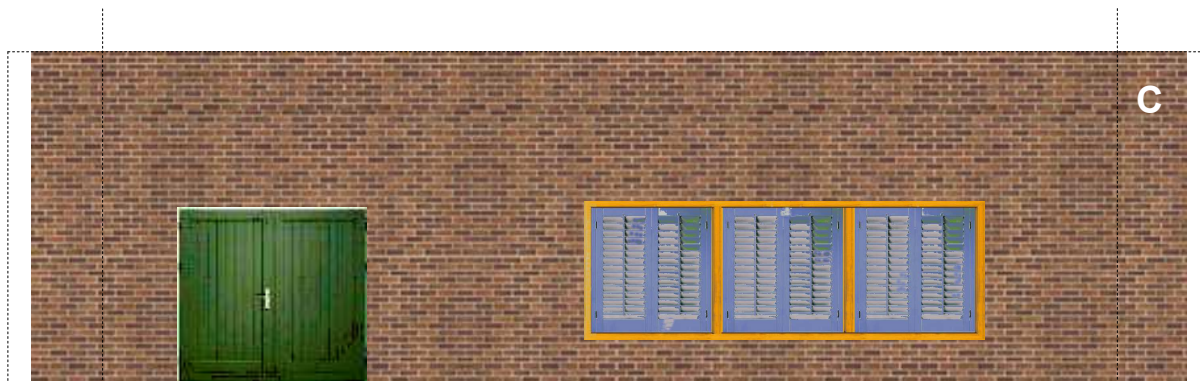
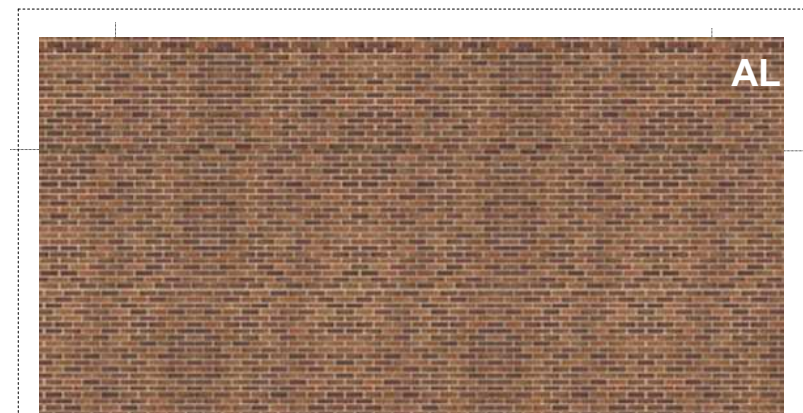
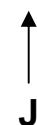
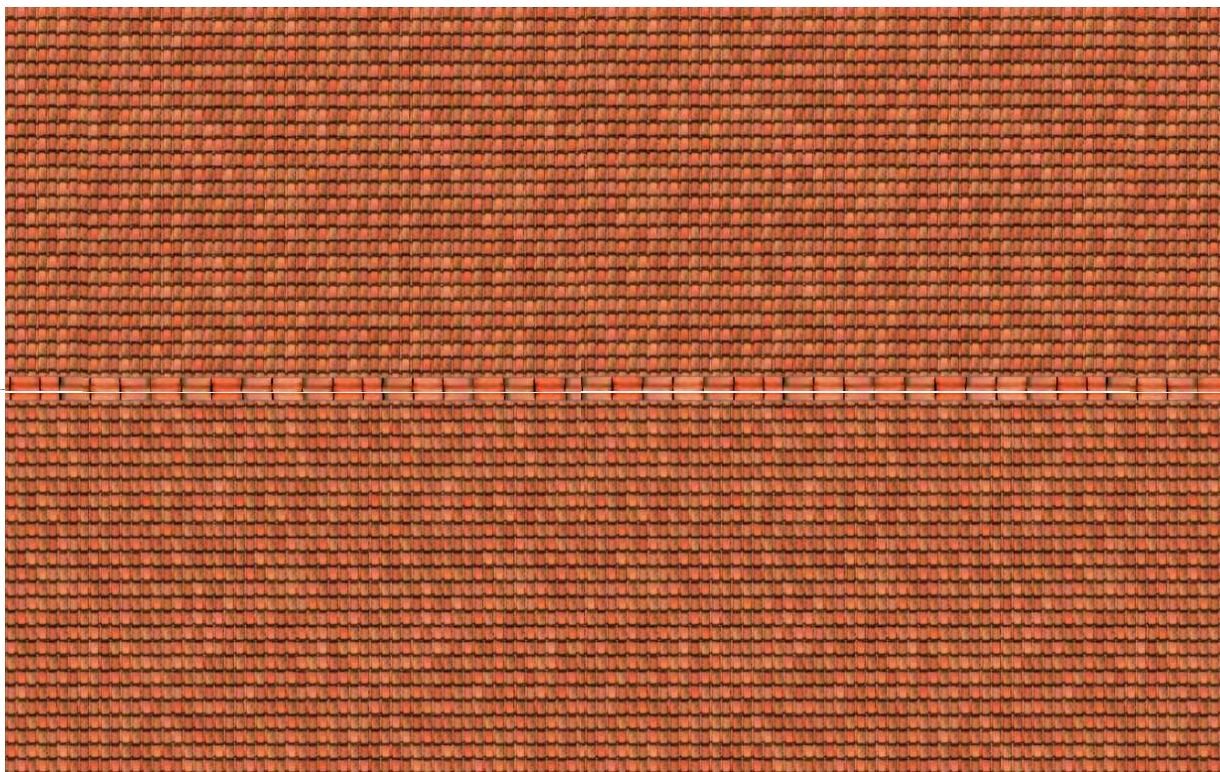


Item:	006 store
Scale:	1:87
Print on:	80gr/m2 glue on cardboard 1mm
Copyright:	Image4mail.nl
Page:	1 / 4



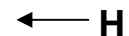
Item:	006 store
Scale:	1:87
Print on:	80gr/m2
Copyright:	Image4mail.nl
Page:	2 / 4



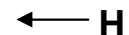


B

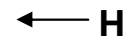
Bloemen & Planten



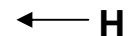
Flowers & Plants



Blumen und Pflanzen



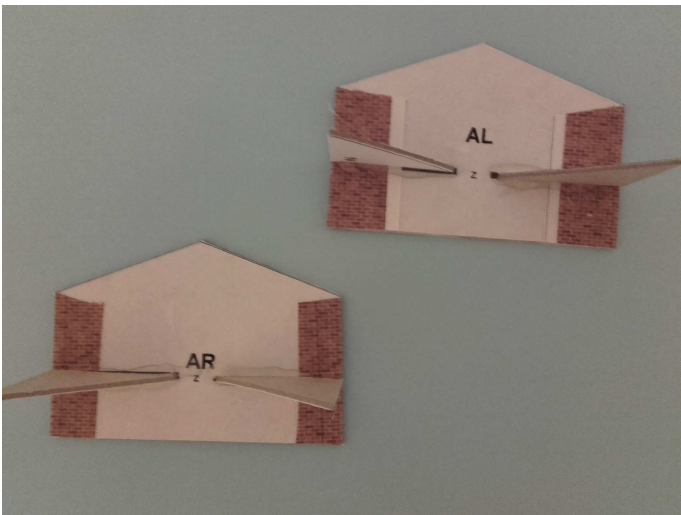
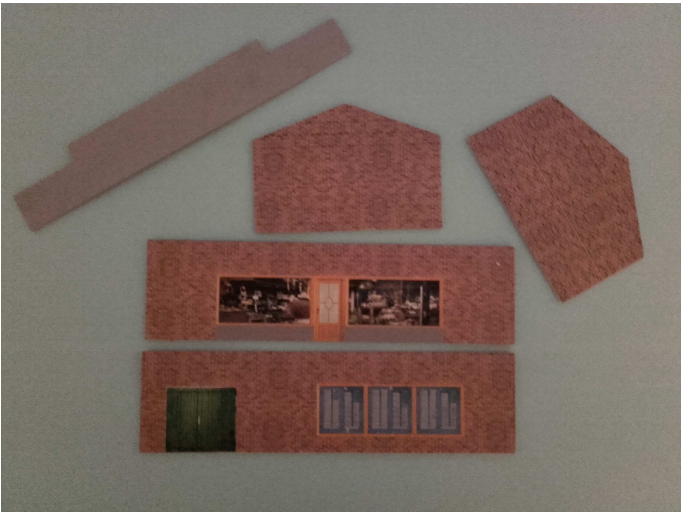
Fleurs & Plantes



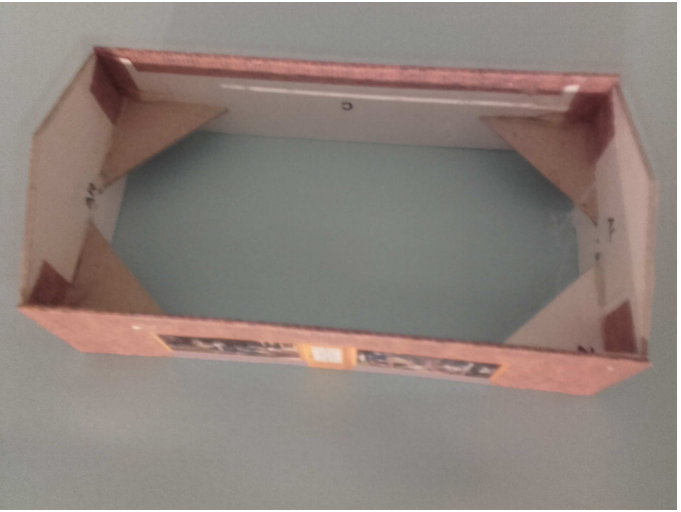
Item:	006 store
Scale:	1:87
Print on:	80gr/m2
Copyright:	Image4mail.nl
Page:	3 / 4



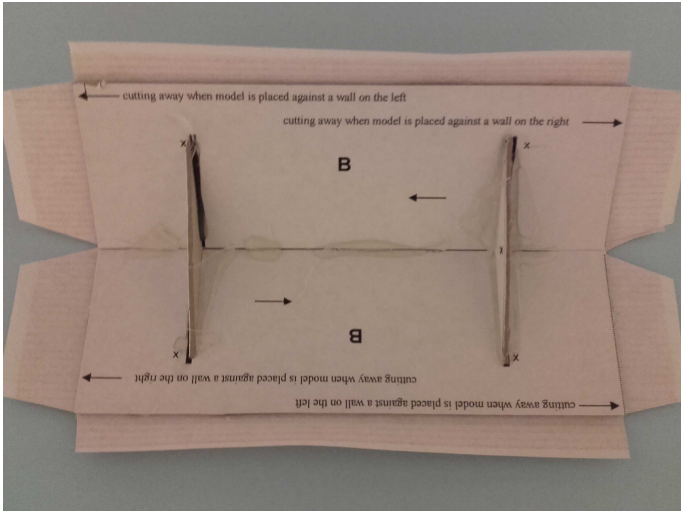
- 1 Paste page 1 on 1mm cardboard.
- 2 then cutting the parts with a sharp hobby knife from the carton.
- 3 then cutting the parts from the printed 80 gsm paper and stick it on the cardboard components except the roof parts B w.



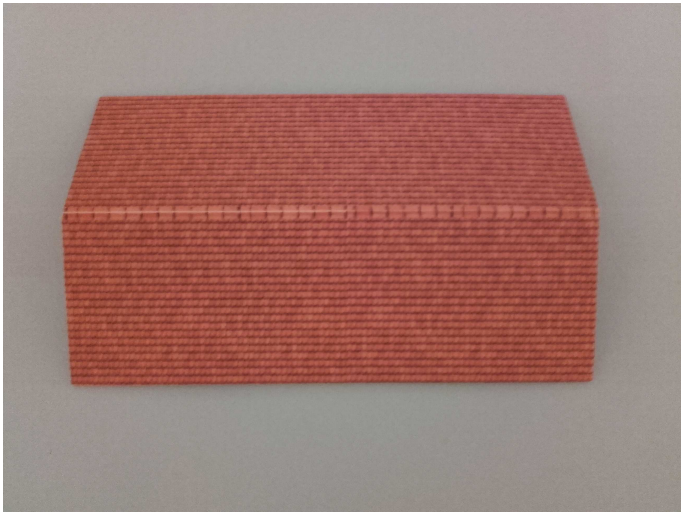
- 4 Glue the parts z with a glue gun on the parts AL and AR.
- 5 then glue with the glue gun parts AL and AR according to the example below, with sections D and C.



6 Then glue the parts B and W together



7 and paste the roofprint from page 3 on part B



Item:	006 store
Scale:	1:87
Print on:	80gr/m2
Copyright:	Image4mail.nl
Page:	4 / 4